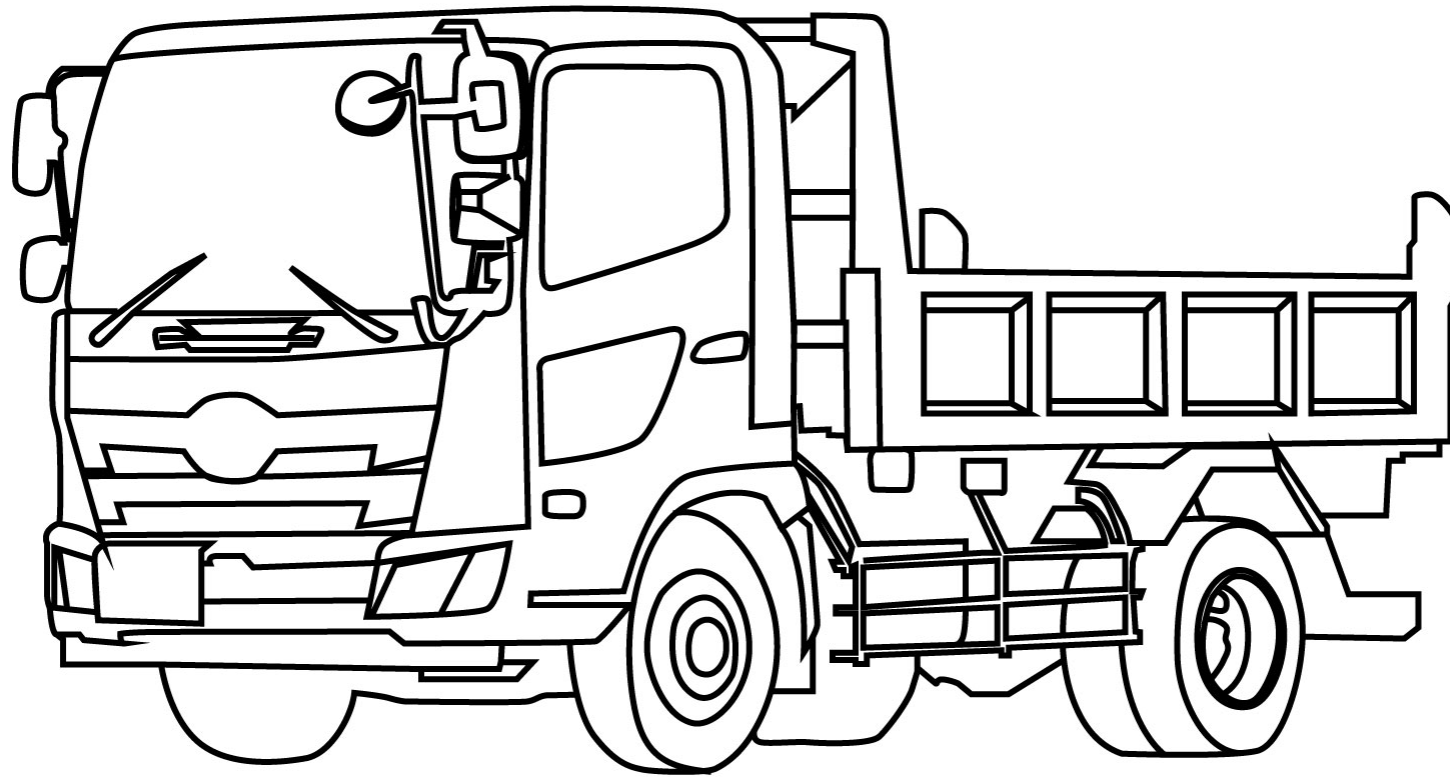




Proposal materials for Logistics companies



Machinery rental service



MYANMAR KINAN CO.,LTD



Transportation of heavy objects and installation work



Machinery rental service



MYANMAR KINAN CO.,LTD



Vanning, Devanning, Loading, Unloading work



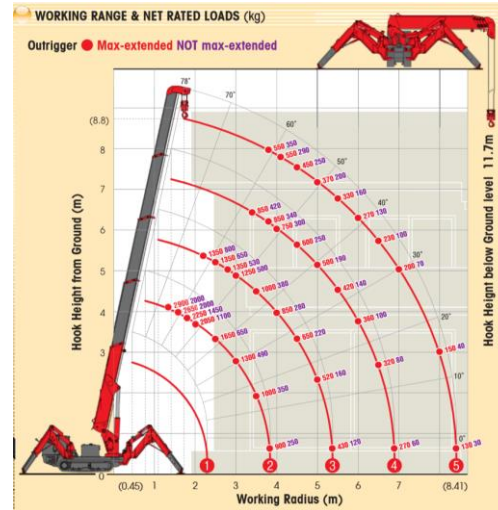
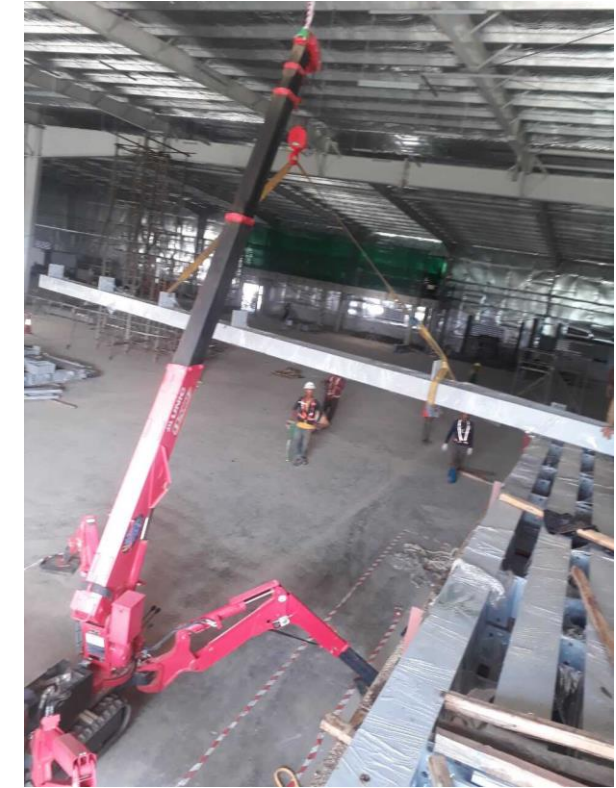
Machinery rental service



MYANMAR KINAN CO.,LTD



2.9t spider crane for work inside buildings



DIMENSIONS

Crane model	UR-W295C	UR-W295C1
● Total width	600mm	
● Total height	1375mm [1430mm]	
● Total length	2690mm	2730mm
● Mass of crane	1850kg [1980kg]	1920kg [2040kg]

[with electric power unit]

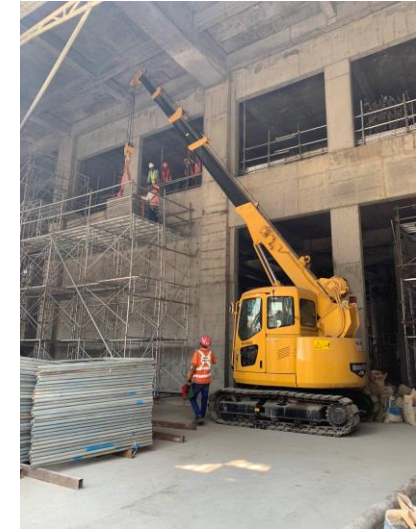
Machinery rental service



MYANMAR KINAN CO.,LTD



Steel structure assembly work



Machinery rental service



MYANMAR KINAN CO.,LTD



Equipment transport truck with crane



TM-ZX 1500HRS/HS

Cargo Crane for Large Size Vehicles

LIMIT WARNING LAMPS (THREE-COLOR)*

The external limit warning lamp uses LEDs to show the moment load rate in three colors, helping to prevent the crane from falling over and damage due to overloading, and other accidents.

STRONG OUTRIGGER WITH SAFETY LOCK

Strong 5.8 m wide and powerful outriggers with ball structure jacks, an easy and safe lock system together with new universal floats. The lock system is one of the advanced reliable TADANO standard safety systems. Left and right outriggers can also be exchanged with no change in functionality.



TWO POWERFUL ELEVATING CYLINDERS

These cylinders use hydraulic, control, and processing technologies cultivated from more than 50 years of manufacturing experience, supporting greater work capacity.



BOOM HEIGHT LIMIT FUNCTION

Working Height Limiter stops boom elevation and telescoping operations when the boom top height reaches a registered height.

HIGH-POWERED RADIO CONTROLLER

Radio Controller with powerful transmitting output automatically selects a frequency free of jamming, out of as many frequencies as 40 channels, to avoid interference troubles.

ANTI-TWO-BLOCK FUNCTION

This function stops crane operation (hoisting up, boom elevation, and boom extension) when the hook block touches the weight, and warns the operator with an alarm, to prevent the hook block from hitting the boom head.

AUTOMATIC SLEWING LOCK SYSTEM

The boom is mechanically locked securely at the boom post base to prevent the boom from accidentally slewing out during travel.

HOOK IN / OUT SYSTEM

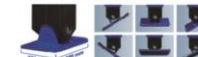
TADANO original HOOK IN system is equipped as standard and enhances work efficiency. During hook out, the boom heads automatically to avoid hitting cargo.

CABLE FOLLOWER

The cable follower prevents disordered cable line reeling winding by always pressing the cable onto the winch drum and puts the wire rope at a right position.

TILTABLE FRONT OUTRIGGER JACK FLOAT

The universal float rotates 32 degrees to fit any ground, for better stability. Large floats reduce ground pressure.



BIG HYDRAULIC TANK

Big hydraulic tank with approximately 120 liter capacity.

Machinery rental service



MYANMAR KINAN CO.,LTD



Material transportation work



Machinery rental service



MYANMAR KINAN CO.,LTD



Heavy equipment transport truck



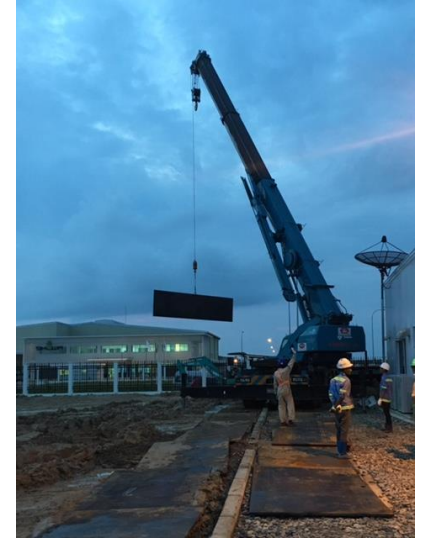
Machinery rental service



MYANMAR KINAN CO.,LTD



Rough-terrain crane work



Machinery rental service



MYANMAR KINAN CO.,LTD



Hanging, Carrying, Unloading Telehandler work



7m Boom 3t Payload



14m/18m Boom 4t Payload



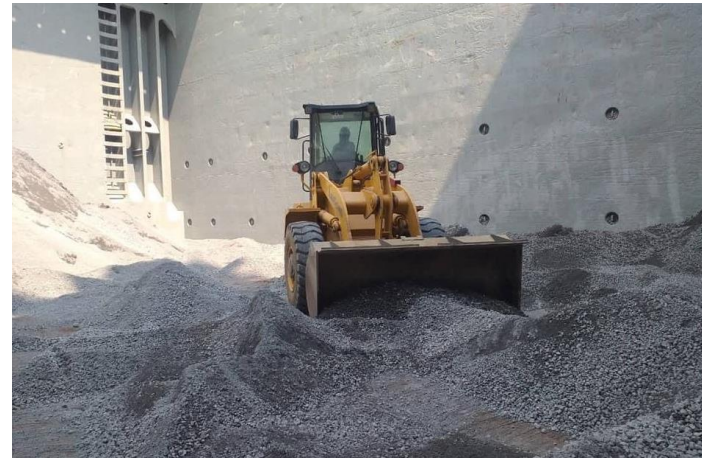
Machinery rental service



MYANMAR KINAN CO.,LTD



Loading soil, sand, crushed stone, and fertilizer



Machinery rental service



MYANMAR KINAN CO.,LTD



Myanmar Kinan Company Profile



Company Name	MYANMAR KINAN Co.,Ltd.
Establishment	December / 2015
Head Office	Yangon, Myanmar
Managing Director	HIROFUMI NAKAZATO
Capital	5,000,000US\$
Shareholder	KINAN Co.,Ltd. NISSAN PRINCE WAKAYAMA HANBAI Co.,Ltd.
Office location	Block No.153 Thilawa Industrial zone the Republic of the Union of Myanmar
Suppliers	Japanese general contractors, Local company
Bank	Mizuho Bank.,Ltd. The Bank of Tokyo-Mitsubishi UFJ.,Ltd. Sumitomo Mitsui Bank CB Bank



OVERSEAS BUSINESS MANAGER
Hirofumi Nakazato



100% investment
(100% foreign capital)



MYANMAR KINAN
CO.,LTD

KINAN History

Jun 1974
Established KINAN



Jun 2008
Japan Spa Business



Jun 2008
Japan Kinan New Head Office



Jun 2012
Clean Energy Business



Sep 2015
Start Overseas Business



May 2016
Thilawa Branch Open



May 2017
Bago Branch Open



Jun 2018
Yangon Branch Open



Jan 2019
Myawaddy Branch Open



Oct 2019
New Head Office
Training Center Open



Jun 2020
Ywar Thar Gyi Branch Open

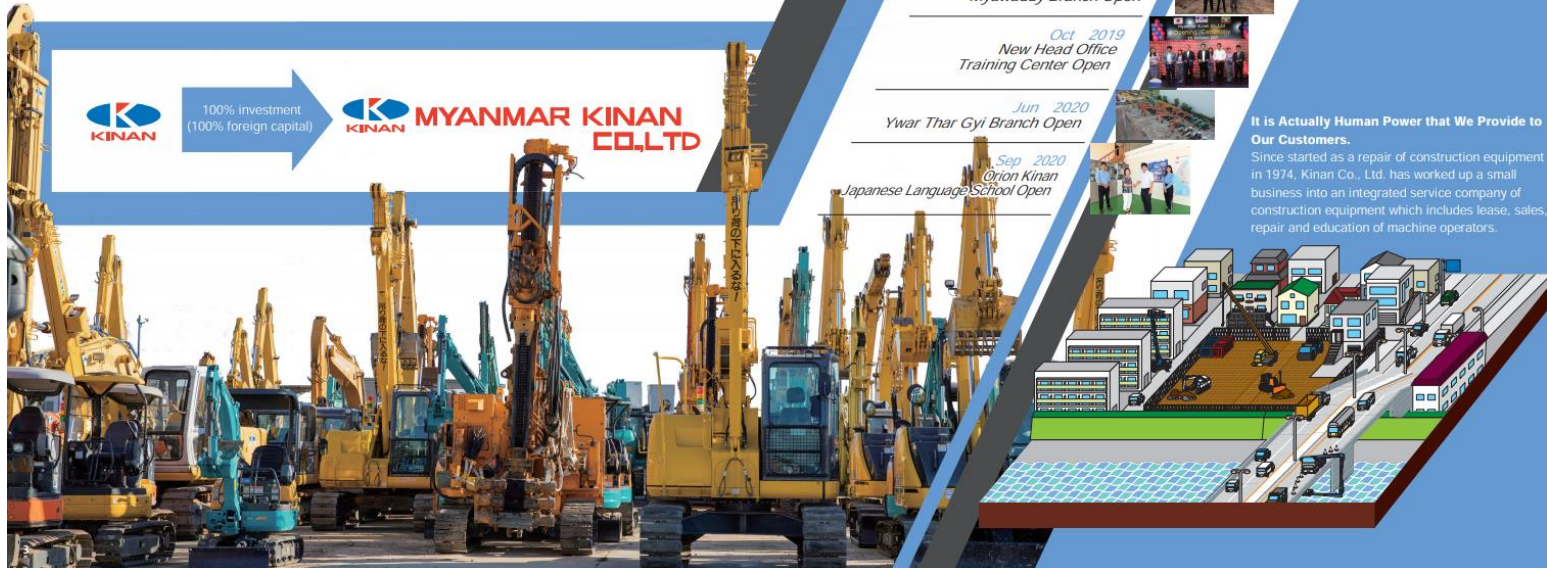


Sep 2020
Orion Kinan
Japanese Language School Open



It is Actually Human Power that We Provide to Our Customers.

Since started as a repair of construction equipment in 1974, Kinan Co., Ltd. has worked up a small business into an integrated service company of construction equipment which includes lease, sales, repair and education of machine operators.



Machinery rental service



MYANMAR KINAN CO.,LTD



Myanmar domestic network

Sales and Service Branch Network



Thilawa Branch

Block No.153,
Thilawa Industrial zone, Yangon
Ph: +95 9458 6888 04



ORION KINAN JAPAN Language School

Kinan Building second floor Block
No.153, Thilawa industrial Zone,
Yangon



Bago Branch

No.17.5 Quarter, Myo shaung
Street, Bago myohit, Bago
Ph: +95 9448 8389 61



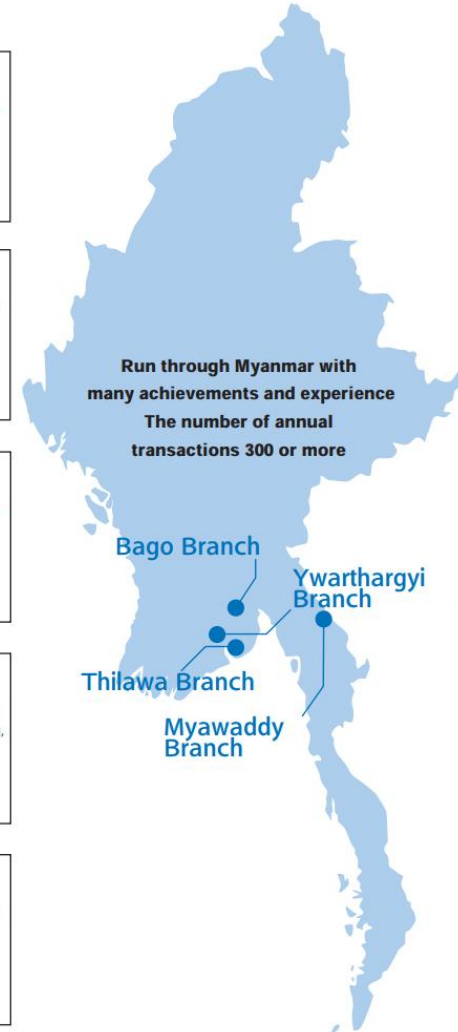
Myawaddy Branch

No.1287(N.9/4)Thingan Nyi Naung,
Asia Main Road, Kayin State,
Myawaddy
Ph: +95 9428 9007 27



Ywarthargyi Branch

Block No.(1001) ,
Lay Daunt Kan Village,
East Dagon Township, Yangon
Ph: +95 97 6320 9510



Achievements of Big projects in Myanmar

Thilawa SEZ ZONE B Project
Mandalay Myotha Industrial Park Project
Yangon Urban Area Water Supply Improvement Project P1
Yangon Urban Area Water Supply Improvement Project P2
Pyin Oo Lwin to Shan Road Project
Dawei Road Project
New TAKETA Bridge Construction Project
Thilawa new port Construction Project
Grain Terminal Port
Wilmar New port Construction Project
Thilawa Access road Project
Yangon Landmark Project
RK SEZ New Factory II Construction Project
TCC SEZ New Factory Construction Project
Yakult SEZ New Factory Construction Project
Koryo SEZ Cable Project
PEB Steel SEZ New Factory Construction Project
YTL SEZ New Cement Factory Construction Project
Bluescope SEZ New Factory Construction Project
SUZUKI SEZ New Factory Construction Project
Ryobi SEZ New Logistics Warehouse Construction Project
Mingaladon Myanmar Beer Factory renovation Project
Mingaladon OJI Factory renovation Project



Machinery rental service



MYANMAR KINAN CO.,LTD



GPS Truck management system



GPS Truck Management System

Helping you keep safe every mile of the way!

myanmar KINAN provides flexible easy to use mobile applications, alerting and geofencing options enabling effective personal tracking.

Benefits

Safe driving speeds.

Authorised vehicle access.


Asset security.

You can manage the operation time and speed.

You can check it from your PC.


Speed

HGV: 4 km/h above the speed limit for 30 seconds.
Speed limit is variable depending on zones.
Custom In-vehicle configurable speed alarm.



Driving Hours

Max 4 hours of continues driving.
Max 9 hours of driving per day.
Max shift time 12 hours.
Min Rest time 15 min.



Machinery rental service



MYANMAR KINAN CO.,LTD



Myanmar Kinan Business Introduction Video



Special Construction Method

We possess machines to be used in a number of special construction methods.

How can a customer use machines more easily as a company that proposes equipment to customers?

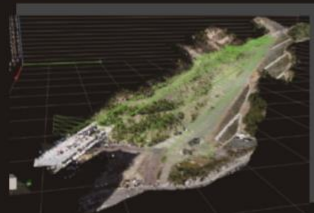
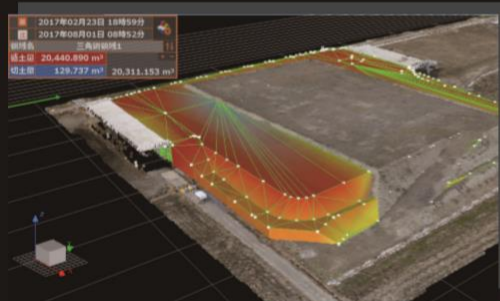
How can we satisfy our customers' requests?

We have challenged boldly to introduce and develop new machines.

Now in Japan we are focusing on the field of ICT construction which automates construction.

We aim to be an ONLY one company that can serve as a good partner for our customers.

<https://youtu.be/peEhNCfd508>



Machinery rental service



MYANMAR KINAN CO.,LTD